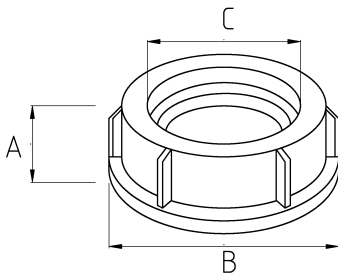


IMC BUSHING, STEEL, INSULATED, WITH GROUNDING LEG



- material : die cast zinc
- Galvanized steel body
- Equipped with a plastic plug
- IMC conduit bushing
- The conduit cap prevents cable damage during cable pulling
- Additionally, it has a grounding lug mounted on the body

Technical Details



Product Code	Size I	A	B	C	D	E	F	Net Weight (kg/pc)	In Pack (pc)
N425016	1/2"	10.30	28.20	14.00				0,022	120.00
N425021	3/4"	13.35	32.70	18.90				0,030	100.00
N425026	1"	15.25	40.00	24.90				0,047	80.00
N425035	1 1/4"								
N425040	1 1/2"	17.22	56.55	37.80				0,065	60.00
N425052	2"	19.30	68.30	46.00				0,109	40.00
N425063	2 1/2"	19.75	81.50	57.20				0,139	40.00
N425078	3"	20.00	97.00	71.80				0,169	20.00
N425102	4"							0,245	6.00
N425125	5"								
N425150	6"							2,501	2.00