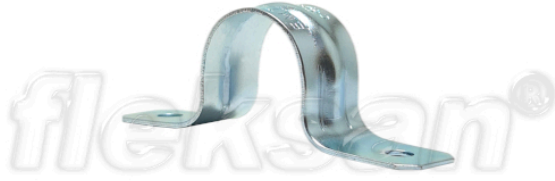
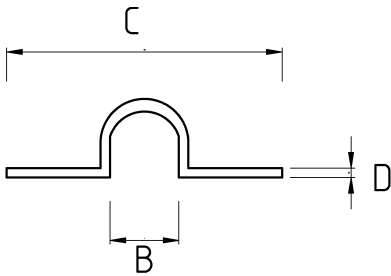


IMC STRAP, TWO HOLE



- material : hot-dip galvanized
- Galvanized steel body
- Double ear clamp with sizes ranging from 1/2" to 4"
- Double hole for mounting
- Preferred when IMC conduit is mounted flush to the surface
- UL certified

Technical Details



Product Code	Size I	A	B	C	D	E	F	Net Weight (kg/pc)	In Pack (pc)
N482016	1/2"							0,006	200.00
N482021	3/4"							0,013	200.00
N482026	1"							0,013	100.00
N482035	1 1/4"							0,026	50.00
N482040	1 1/2"							0,040	40.00
N482052	2"							0,044	40.00
N482063	2 1/2"							0,098	15.00
N482078	3"								
N482102	4"								