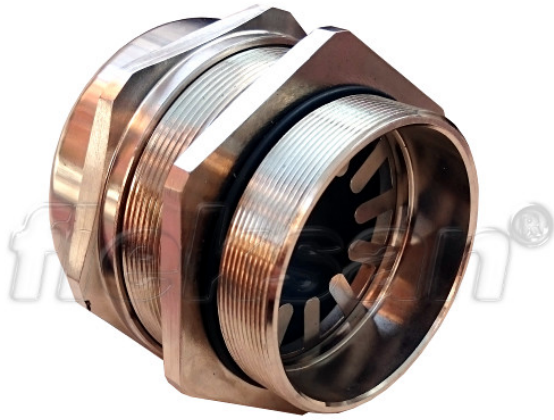


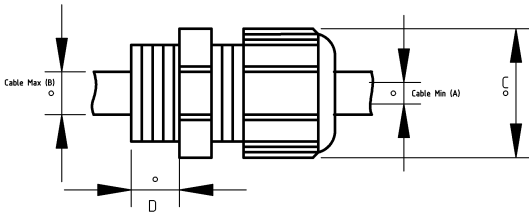
## BRASS CABLE GLAND, EMC

- Brass nickel plated core and cover
- EMC protective cable gland
- Inside : PA6 clamping insert and copper alloy contact spring
- With NBR O-ring
- High corrosion protection
- High vibration and traction resistance
- Locknuts must be ordered separately
- UL Listed (E199260)



IP68	-20 C	+100 C
------	-------	--------

### Technical Details



Product Code	Size I	A	B	C	D	E	Net Weight (kg/pc)	In Pack (pc)
T610203	PG7	3.00	6.50					
T610204	PG9	4.00	8.00				0,021	100.00
T610205	PG11	5.00	10.00				0,029	100.00
T610206	PG13.5	6.00	12.00				0,031	100.00
T610210	PG16	10.00	14.00				0,038	100.00
T610213	PG21	13.00	18.00				0,069	50.00
T610218	PG29	18.00	25.00				0,138	25.00
T610222	PG36	22.00	32.00				0,257	20.00
T610230	PG42	30.00	38.00				0,295	20.00
T610234	PG48	34.00	44.00				0,397	5.00
T610403	M12x1.5	3.00	6.50				0,015	200.00
T610404	M16x1.5	4.00	8.00					
T610406	M20x1.5	6.00	12.00				0,033	100.00
T610410	M25x1.5	10.00	14.00				0,056	60.00
T610411	M25x1.5	13.00	18.00				0,070	50.00
T610413	M32x1.5	13.00	18.00				0,098	40.00
T610418	M40x1.5	18.00	25.00				0,157	20.00

"Your Conduit Partner"

T610422	M50x1.5	22.00	32.00				0,292	16.00
T610434	M63x1.5	34.00	44.00				0,424	8.00
T610445	M72x1.5	45.00	55.00					4.00
T610449	M75x1.5	50.00	63.00				0,937	4.00
T610450	M80x1.5	50.00	63.00				0,945	4.00
T610460	M90x1.5	60.00	70.00				1,368	2.00