

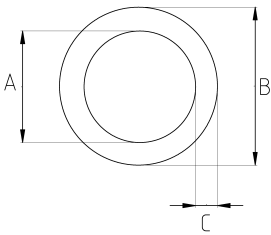


FLEXIBLE CONDUIT, STAINLESS STEEL

- Stainless steel core (SS304)
- Extremely small bending radius
- High flexibility
- Non liquid – tight

IP42	-40 C	+350 C
------	-------	--------

Technical Details



Product Code	Size I	A	B	C	D	E	Net Weight (kg/m)	In Pack (m)
SL010	1/4"	10.00	13.50	1.75	25.00		0,075	100.00
SL013	3/8"	12.50	16.00	1.75	33.00		0,071	50.00
SL016	1/2"	16.00	19.50	1.75	38.00		0,082	50.00
SL021	3/4"	20.50	25.00	2.25	45.00		0,179	50.00
SL026	1"	26.50	30.50	2.25	55.00		0,269	50.00
SL035	1 1/4"	35.00	40.00	2.50	62.00		0,395	30.00
SL040	1 1/2"	40.00	45.00	2.50	90.00		0,401	30.00
SL052	2"	51.50	56.50	2.50	110.00		0,637	20.00
SL063	2 1/2"	63.00	70.50	3.75	130.00		1,025	10.00
SL078	3"	78.00	85.50	3.75	160.00		1,231	10.00
SL102	4"	102.00	109.00	3.75	210.00		1,736	5.00