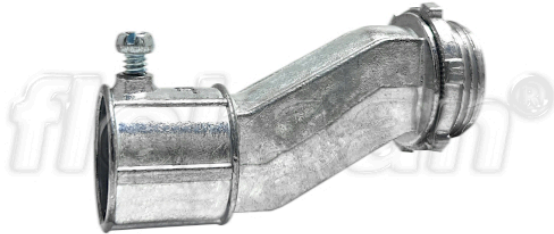
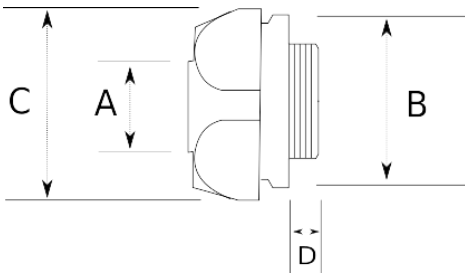


## EMT OFFSET SET SCREW CONNECTOR

- Zinc alloy body
- Offset connects EMT conduit to metal outlet boxes or enclosures
- High-strength, corrosion-resistant
- With locknut



### Technical Details



Product Code	Size I	A	B	C	D	E	Net Weight (kg/pc)	In Pack (pc)
R335016	1/2"						0,035	100.00
R335021	3/4"						0,071	40.00
R335026	1"						0,108	20.00