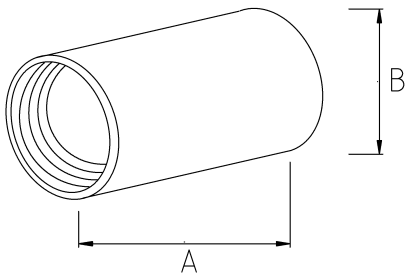


EMT COMPRESSION COUPLING

- Die cast zinc
- For dry or damp locations



Technical Details



Product Code	Size I	A	B	C	D	E	Net Weight (kg/pc)	In Pack (pc)
R350016	1/2"						0,040	100.00
R350021	3/4"						0,070	50.00
R350026	1"						0,125	25.00
R350035	1 1/4"							
R350040	1 1/2"						0,292	16.00
R350052	2"							
R350063	2 1/2"							
R350078	3"							
R350102	4"							