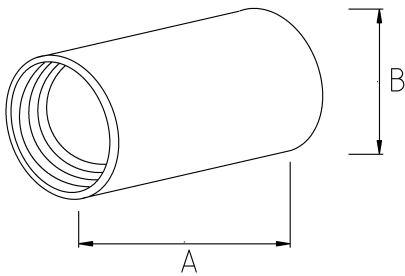


EMT SET SCREW COUPLING

- Die cast zinc
- Easy install
- For dry location applications



Technical Details



Product Code	Size I	A	B	C	D	E	Net Weight (kg/pc)	In Pack (pc)
R355016	1/2"	40.00	22.00				0,027	100.00
R355021	3/4"	50.00	30.00				0,045	60.00
R355026	1"	52.00	35.00				0,041	40.00
R355035	1 1/4"	60.50	44.80				0,087	20.00
R355040	1 1/2"	68.60	50.40				0,106	16.00
R355052	2"	89.25	64.15				0,137	8.00
R355063	2 1/2"	99.60	82.20				0,253	4.00
R355078	3"	113.40	100.00				0,352	2.00
R355102	4"	132.50	125.75				0,481	8.00