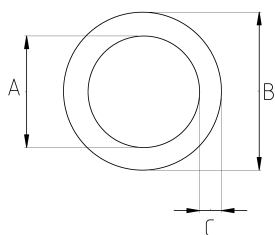


**RL series EMT conduits are manufactured from pre-galvanized electro-galvanized steel body. They are designed as an economical solution for general-purpose electrical installations.**



- Lightweight and economical – easy to handle and install
- Pre-galvanized coating provides basic corrosion resistance
- High-quality ERW longitudinally welded steel body
- Fire safety – non-combustible, prevents flame spread
- Electromagnetic shielding (EMI – SCREEN)
- Deburred inner surface prevents cable damage
- Can be cut at any point, but cannot be bent or threaded
- Standard length: 10 feet (3,05 m)

### Technical Details



Product Code	Size I	A	B	C	D	E	Net Weight (kg/m)	In Pack (m)
RL016	1/2"	16.43	17.93	0.75			0,277	61.00
RL021	3/4"	21.72	23.42	0.85			0,419	30.50
RL026	1"	27.34	29.54	1.10			0,704	30.50
RL035	1 1/4"	35.95	38.35	1.20			1,010	15.25
RL040	1 1/2"	41.80	44.20	1.20			1,169	15.25
RL052	2"	53.02	55.80	1.30			1,616	15.25