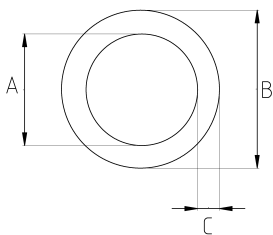


Passive Fire Protection No.1

- Pre-galvanized steel core
- High quality ERW (Electric resistance welding) welded
- Easy carry and montage
- Mechanical protection
- EMT interior coating provides a smooth surface for faster wire pulling
- High grade durable & ductile steel for long life
- RE model is manufactured 3 meters lengths



Technical Details



Product Code	Size I	A	B	C	D	E	Net Weight (kg/m)	In Pack (m)
RE016	1/2"	15.80	17.90	1.07			0,420	60.00
RE021	3/4"	20.90	23.40	1.25			0,673	30.00
RE026	1"	26.60	29.50	1.45			0,963	30.00
RE035	1 1/4"	35.10	38.40	1.65			1,410	15.00
RE040	1 1/2"	40.90	44.20	1.65			1,640	15.00
RE052	2"	51.90	55.80	1.65			2,080	9.00
RE063	2 1/2"	69.40	73.00	1.83			3,210	3.00
RE078	3"	85.20	88.90	1.83			3,910	3.00
RE102	4"	110.10	114.30	2.11			5,850	3.00