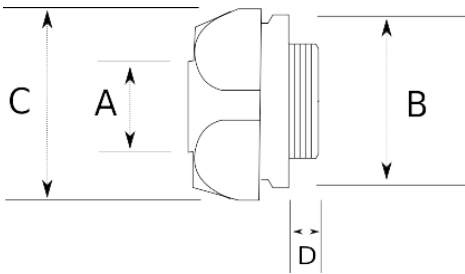


EMT COMPRESSION CONNECTOR COPPER COATED



- material : die cast zinc
- Copper coated compression connector for EMT conduits

Technical Details



Product Code	Size I	A	B	C	D	E	F	Net Weight (kg/pc)	In Pack (pc)
R510016	1/2"								
R510021	3/4"								
R510026	1"								