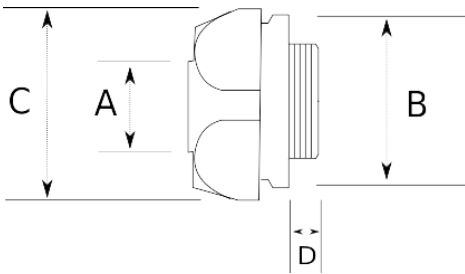


## EMT COMPRESSION CONNECTOR

- Die cast zinc
- For dry or damp location applications
- With locknut



### Technical Details



Product Code	Size I	A	B	C	D	E	Net Weight (kg/pc)	In Pack (pc)
R300016	1/2"						0,034	100.00
R300021	3/4"						0,049	50.00
R300026	1"						0,067	50.00
R300035	1 1/4"						0,112	25.00
R300040	1 1/2"						0,148	20.00
R300052	2"							
R300063	2 1/2"							
R300078	3"							
R300102	4"						0,903	16.00