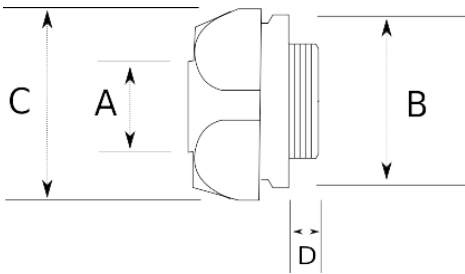


EMT SET SCREW CONNECTOR



- material : die cast zinc
- Die cast zinc
- Easy install
- For dry location applications

Technical Details



Product Code	Size I	A	B	C	D	E	F	Net Weight (kg/pc)	In Pack (pc)
R305016	1/2"	18.20	22.65		8.50			0,022	100.00
R305021	3/4"	23.70	29.00		10.00			0,038	100.00
R305026	1"	30.00	36.00		12.00			0,051	60.00
R305035	1 1/4"	39.00	45.50		13.00			0,082	25.00
R305040	1 1/2"	44.50	51.40		14.00			0,103	20.00
R305052	2"	56.00	62.00		15.00			0,154	8.00
R305063	2 1/2"							0,284	40.00
R305078	3"								
R305102	4"								