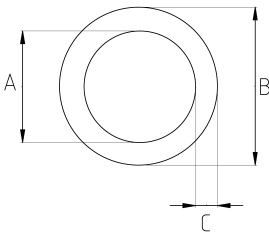


**RD series EMT conduits are made from hot-dip galvanized steel body, offering superior corrosion protection. With UL certification and ERW longitudinal welding, they ensure safe and reliable cable management.**



- material : hot-dip galvanized
- standard : UL797
- Hot-dip galvanized steel body
- High-quality ERW longitudinal welding
- UL certified (American standard)
- Fire safety – non-combustible, prevents flame spread and smoke emission
- Highest corrosion resistance among steel EMT conduits
- Electromagnetic shielding (EMI – SCREEN)
- Deburred interior prevents cable damage
- Can be cut and bent, but cannot be threaded
- Standard length: 10 feet (3,05 m)

### Technical Details



Product Code	Size I	A	B	C	D	E	F	Net Weight (kg/m)	In Pack (m)
RD016	1/2"	15.80	17.90	1.07				0,420	30.50
RD021	3/4"	20.90	23.40	1.25				0,672	30.50
RD026	1"	26.60	29.50	1.45				0,950	15.25
RD035	1 1/4"	35.10	38.40	1.65				1,410	15.25
RD040	1 1/2"	40.90	44.20	1.65				1,640	15.25
RD052	2"	51.90	55.80	1.65				2,080	9.15
RD063	2 1/2"	69.40	73.00	1.83				3,210	3.05
RD078	3"	85.20	88.90	1.83				3,910	3.05
RD102	4"	110.10	114.30	2.11				5,850	3.05