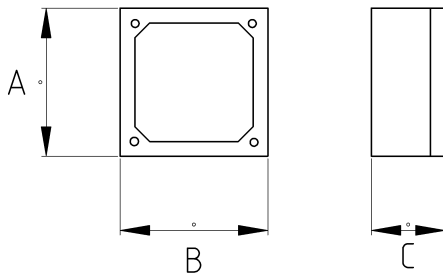


fleksan[®]

- material : die cast zinc

- The 4 Way X Circular Junction Box is designed for EMT systems
- Set Screw Type
- Featuring a set screw connection at the conduit entry to securely fasten EMT

Technical Details



Product Code	Size I	A	B	C	D	E	F	Net Weight (kg/pc)	In Pack (pc)
R377016	1/2"								
R377021	3/4"								
R377026	1"								