

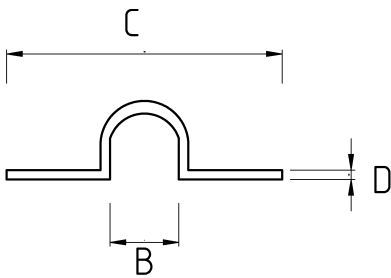
## EMT HANGER



- material : hot-dip galvanized

- Galvanized steel body
- Screw-type EMT conduit hanger available in sizes from 1/2" to 4"
- Certified to American UL standards
- Preferred when EMT conduit needs to be installed with a 1 cm gap from the mounting surface

### Technical Details



Product Code	Size I	A	B	C	D	E	F	Net Weight (kg/pc)	In Pack (pc)
R487016	1/2"				1.30			0,030	100.00
R487021	3/4"				1.30			0,028	80.00
R487026	1"				1.30			0,039	30.00
R487035	1 1/4"				1.65			0,057	20.00
R487040	1 1/2"				1.65			0,070	30.00
R487052	2"				1.65			0,095	20.00
R487063	2 1/2"				2.25			0,122	10.00
R487078	3"								
R487102	4"							0,219	40.00