

Infos of R7790 :



- EMT PIPE CAPS, OPENEND
- IP
- MIN
- MAX
- CERT
- R7790

► PVC Core



Sizes & Prices :

Product Code	Size	Size	A (mm)	B (mm)	C (mm)	D (mm)	Meters in Pack (pc)	Net Weight (kg/pc)	Unit Price (USD/pc)
R779016	1/2"						300.00	0,002	0,23
R779021	3/4"						200.00	0,002	0,34
R779026	1"						100.00	0,004	0,45
R779035	1 1/4"						50.00	0,008	0,56
R779040	1 1/2"						30.00	0,010	0,68
R779052	2"						15.00	0,016	0,91

Accessories :

FLEXIBLE CONDUIT CONNECTOR, METALLIC 90



R5950

FLEXIBLE CONDUIT CONNECTOR, METALLIC 90

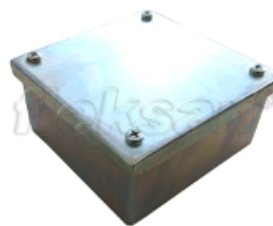
EMT CONDUIT PRE-GALVANISED



RE

Passive Fire Protection No.1

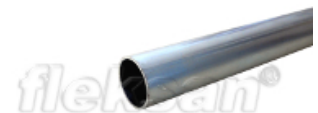
STEEL TERMINAL BOX



R4600

STEEL TERMINAL BOX

EMT CONDUIT HDG UL



RC

Passive Fire Protection No.1