

# R3970

EMT PULL ELBOW WITH GASKET 90 - fleksan.com



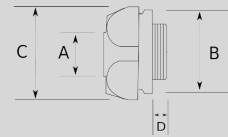
"Your Conduit Partner"

Infos of R3970 :



- EMT PULL ELBOW WITH GASKET 90
- IP
- MIN
- MAX
- CERT
- R3970

- ▶ For dry locations
- ▶ Removable steel cover facilitates wire pulling
- ▶ Set-screw type
- ▶ Includes gasket



Sizes & Prices :

Product Code	Size	Size	A (mm)	B (mm)	C (mm)	D (mm)	Meters in Pack (pc)	Net Weight (kg/pc)	Unit Price (USD/pc)
R397016	1/2"							0,000	3,59
R397021	3/4"							0,000	5,52
R397026	1"							0,000	10,32

Accessories :

EMT CONNECTOR, COMPRESSION 90



R3900

EMT CONNECTOR, COMPRESSION 90

WIRE PULLING LUBRICANT 1LT



R8100

WIRE PULLING LUBRICANT 1LT

EMT CONNECTOR, COMPRESSION



R3000

EMT CONNECTOR, COMPRESSION

CUTTING TOOL FOR METALLIC CONDUITS



R8979

CUTTING TOOL FOR METALLIC CONDUITS