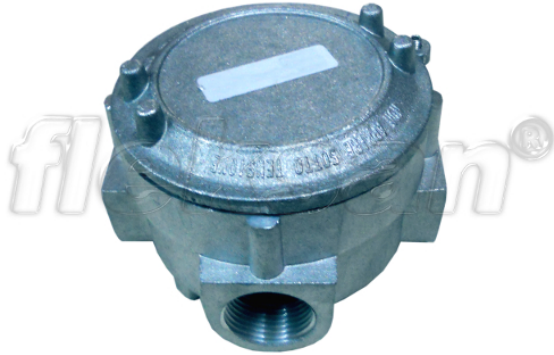


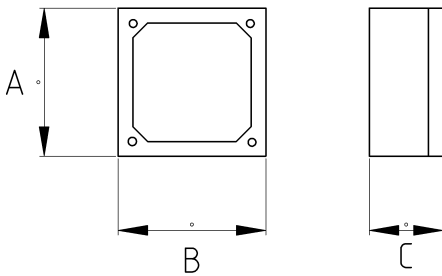
## EX-PROOF BOX, ALUMINUM

• II 2 GD - Ex d IIC Gb - Ex tb IIIC Db - IP66/67



IP67	-40 C	+150 C
------	-------	--------

### Technical Details



Product Code	Size I	A	B	C	D	E	Net Weight (kg/pc)	In Pack (pc)
V262816	NPT 1/2"				2.00		0,660	3.00
V262821	NPT 3/4"				2.00			
V263816	NPT 1/2"				3.00		0,680	3.00
V263821	NPT 3/4"				3.00		0,660	3.00
V263826	NPT 1"				3.00			
V263835	NPT 1 1/4"				3.00			
V263840	NPT 1 1/2"				3.00			
V263852	NPT 2"				3.00			
V264816	NPT 1/2"				4.00			
V264821	NPT 3/4"				4.00			
V264826	NPT 1"				4.00			
V264835	NPT 1 1/4"				4.00			
V264840	NPT 1 1/2"				4.00			
V264852	NPT 2"				4.00			