

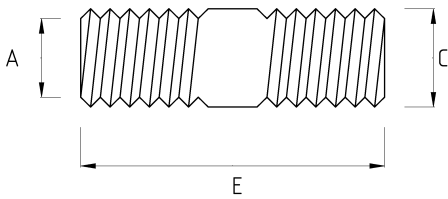
## EX-PROOF NIPPLE, BRASS

- Brass nickel plated core
- ATEX II 2GD Ex db IIC Gb ; Ex eb IIC Gb ; Ex tb IIIC Db, IP66/68

# fleksan®

-40 C	+100 C
-------	--------

### Technical Details



Product Code	Size I	A	B	C	D	E	Net Weight (kg/pc)	In Pack (pc)
V690816	NPT 1/2"							
V690821	NPT 3/4"							
V690826	NPT 1"							
V690835	NPT 1 1/4"							
V690840	NPT 1 1/2"							
V690852	NPT 2"							