

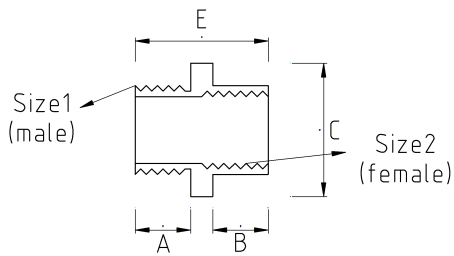
## EX-PROOF REDUCER BUSHING, BRASS

- Brass nickel plated core
- ATEX II 2GD Ex db IIC Gb ; Ex eb IIC Gb ; Ex tb IIIC Db, IP66/68



IP68	-40 C	+100 C
------	-------	--------

### Technical Details



Product Code	Size I	Size II	A	B	C	D	E	Net Weight (kg/pc)	In Pack (pc)
V67420416	M20x1.5	M16x1.5							
V67425416	M25x1.5	M16x1.5							
V67425420	M25x1.5	M20x1.5						0,034	100.00
V67425816	M25x1.5	NPT 1/2"							
V67432420	M32x1.5	M20x1.5						0,093	40.00
V67432425	M32x1.5	M25x1.5						0,064	60.00
V67432816	M32x1.5	NPT 1/2"							
V67432821	M32x1.5	NPT 3/4"							
V67440425	M40x1.5	M25x1.5						0,210	20.00
V67440432	M40x1.5	M32x1.5							
V67450425	M50x1.5	M25x1.5							
V67450432	M50x1.5	M32x1.5							
V67450440	M50x1.5	M40x1.5						0,149	20.00
V67463440	M63x1.5	M40x1.5							
V67463450	M63x1.5	M50x1.5							
V67816813	NPT 1/2"	NPT 3/8"							
V67821416	NPT 3/4"	M16x1.5							

V67821420	NPT 3/4"	M20x1.5						0,043	80.00
V67821816	NPT 3/4"	NPT 1/2"						0,040	80.00
V67826425	NPT 1"	M25x1.5							
V67826816	NPT 1"	NPT 1/2"							
V67826821	NPT 1"	NPT 3/4"							
V67835432	NPT 1 1/4"	M32x1.5							
V67835821	NPT 1 1/4"	NPT 3/4"							
V67835826	NPT 1 1/4"	NPT 1"						0,107	30.00
V67840821	NPT 1 1/2"	NPT 3/4"							
V67840826	NPT 1 1/2"	NPT 1"							
V67840835	NPT 1 1/2"	NPT 1 1/4"							
V67852840	NPT 2"	NPT 1 1/2"							
V67863852	NPT 2 1/2"	NPT 2"							