

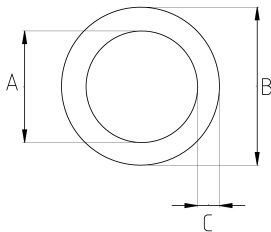
FLEXIBLE CONDUIT, STAINLESS STEEL, SMALL-BORE

- Stainless steel core (AISI304)
- Extremely small bending radius
- High flexibility
- Non liquid – tight



IP42	-40 C	+350 C
------	-------	--------

Technical Details



Product Code	Size I	A	B	C	D	E	Net Weight (kg/m)	In Pack (m)
SS04		4.50	6.50	1.00			0,035	100.00
SS05		4.80	6.80	1.00			0,049	100.00
SS06		6.40	8.40	1.00			0,061	100.00
SS07		7.20	9.50	1.15			0,072	50.00
SS08		8.00	10.90	1.45			0,081	50.00
SS09		9.00	11.20	2.20				
SS10		9.50	12.70	1.60			0,078	100.00
SS13		12.70	15.00				0,157	50.00