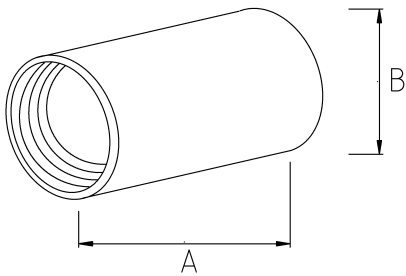


## IMC UNION COUPLING, THREE PIECE FF

- Malleable iron, Three-piece Couplings are used, To join two lengths of threaded conduit, couples conduit when conduit cannot be turned



### Technical Details



Product Code	Size I	A	B	C	D	E	Net Weight (kg/pc)	In Pack (pc)
N452016	1/2"						0,105	25.00
N452021	3/4"						0,151	25.00
N452026	1"						0,215	20.00
N452035	1 1/4"						0,335	10.00
N452040	1 1/2"						0,546	5.00
N452052	2"						0,738	4.00
N452063	2 1/2"							
N452078	3"							
N452102	4"							