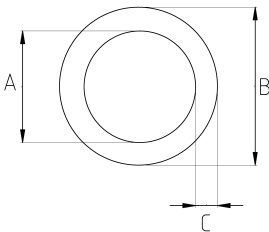


### IMC CONDUIT PRE-GALVANIZED

- Pre-galvanized steel core
- Electromagnetic interference screen system
- Easy carry and montage
- Mechanical protection
- IMC interior coating provides a smooth surface for faster wire pulling
- High grade durable & ductile steel for long life
- IMC is manufactured 10-foot (3,05 meters) lengths
- with galvanized sleeve (one piece)



#### Technical Details



Product Code	Size I	A	B	C	D	E	Net Weight (kg/m)	In Pack (m)
NE016	1/2"	17.12	20.70	1.79			0,790	30.50
NE021	3/4"	22.33	26.13	1.90			1,020	15.25
NE026	1"	28.44	32.76	2.16			1,510	15.25
NE035	1 1/4"	37.28	41.60	2.16			1,950	9.15
NE040	1 1/2"	43.24	47.82	2.29			2,310	9.15
NE052	2"	55.12	59.94	2.41			3,120	6.10
NE063	2 1/2"	64.90	72.52	3.81			6,560	3.05
NE078	3"	80.67	88.29	3.81			8,080	3.05
NE090	3 1/2"	93.24	100.86	3.81			9,350	3.05
NE102	4"	105.82	113.44	3.81			10,410	3.05