




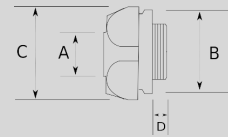
Infos of N3970 :



-  IP
-  MIN
-  MAX
- CERT
- N3970

IMC PULL ELBOW WITH GASKET 90

- ▶ For connecting threaded IMC
- ▶ Removable steel cover facilitates wire pulling
- ▶ Threaded type
- ▶ Includes gasket



Sizes & Prices :

Product Code	Size	Size	A (mm)	B (mm)	C (mm)	D (mm)	Meters in Pack (pc)	Net Weight (kg/pc)	Unit Price (USD/pc)
N397016	1/2"						50.00	0,068	3,59
N397021	3/4"						30.00	0,104	5,52
N397026	1"						20.00	0,191	10,32

Accessories :

IMC CONDULET, OUTLET LR



N4720

CONDULET, IMC, OUTLET LR

IMC CONNECTOR



N3100

IMC CONNECTOR

IMC STRAP, ONE HOLE



N3810

IMC STRAP, ONE HOLE

IMC CONDULET, OUTLET C



N4740

CONDULET, IMC, OUTLET C