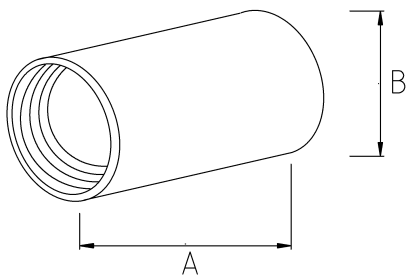


IMC UNION COUPLING, THREE PIECE FF

- Malleable iron, Three-piece Couplings are used, To join two lengths of threaded conduit, couples conduit when conduit cannot be turned



Technical Details



| Product Code | Size I | A | B | C | D | E | Net Weight (kg/pc) | In Pack (pc) |
|--------------|--------|---|---|---|---|---|--------------------|--------------|
| N452016 | 1/2" | | | | | | 0,105 | 25.00 |
| N452021 | 3/4" | | | | | | 0,151 | 25.00 |
| N452026 | 1" | | | | | | 0,215 | 20.00 |
| N452035 | 1 1/4" | | | | | | 0,335 | 10.00 |
| N452040 | 1 1/2" | | | | | | 0,546 | 5.00 |
| N452052 | 2" | | | | | | 0,738 | 4.00 |
| N452063 | 2 1/2" | | | | | | | |
| N452078 | 3" | | | | | | | |
| N452102 | 4" | | | | | | | |