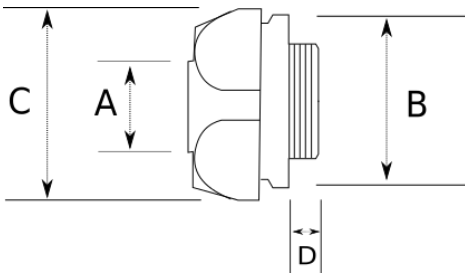


LIQUID-TIGHT CONNECTOR METALLIC FEMALE



- material : die cast zinc
- Die cast zinc
- Liquid-tight female connector for metallic flexible conduits
- Inside : PA6 Ring and galvanized ferrule
- High corrosion protection
- High vibration and traction resistance

Technical Details



| | | |
|------|-------|-------|
| IP65 | -25 C | +70 C |
|------|-------|-------|

| Product Code | Size I | A | B | C | D | E | F | Net Weight (kg/pc) | In Pack (pc) |
|--------------|--------|--------|---|---|---|---|---|--------------------|--------------|
| L320613 | 1/2" | 12.50 | | | | | | 0,035 | 100.00 |
| L320616 | 1/2" | 16.00 | | | | | | 0,044 | 80.00 |
| L320621 | 3/4" | 21.00 | | | | | | 0,063 | 50.00 |
| L320626 | 1" | 26.00 | | | | | | 0,094 | 25.00 |
| L320635 | 1 1/4" | 35.00 | | | | | | 0,139 | 20.00 |
| L320640 | 1 1/2" | 40.00 | | | | | | 0,203 | 12.00 |
| L320652 | 2" | 52.00 | | | | | | 0,291 | 8.00 |
| L320663 | 2 1/2" | 63.00 | | | | | | 0,661 | 4.00 |
| L320678 | 3" | 78.00 | | | | | | 0,863 | 3.00 |
| L320702 | 4" | 102.00 | | | | | | | |