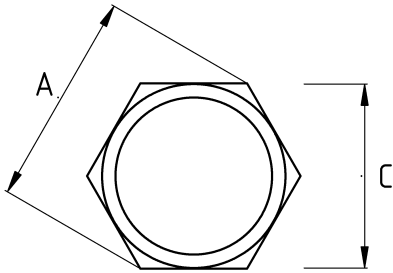


LOCKNUT, BRASS



- material : brass
- standard : EN60423
- Brass nickel plated core

Technical Details



Product Code	Size I	A	B	C	D	E	F	Net Weight (kg/pc)	In Pack (pc)
T640207	PG7	16.60		15.00				0,002	1500.00
T640209	PG9	20.00		18.00				0,002	1000.00
T640211	PG11	23.50		21.00				0,003	800.00
T640213	PG13.5	25.50		23.00				0,003	600.00
T640216	PG16	29.00		26.00				0,005	500.00
T640221	PG21	35.50		32.00				0,007	300.00
T640229	PG29	45.00		41.00				0,013	160.00
T640236	PG36	56.00		51.00				0,022	100.00
T640242	PG42	66.00		60.00				0,034	70.00
T640248	PG48	70.50		64.00				0,058	50.00
T640412	M12x1.5	16.60		15.00				0,002	1000.00
T640416	M16x1.5	21.00		19.00				0,003	800.00
T640420	M20x1.5	26.50		24.00				0,006	600.00
T640425	M25x1.5	33.00		30.00				0,009	500.00
T640432	M32x1.5	39.50		36.00				0,014	250.00
T640440	M40x1.5	51.00		46.00				0,024	100.00
T640450	M50x1.5	66.00		60.00				0,028	50.00

T640463	M63x1.5	77.00	70.00			0,057	30.00
T640475	M75x1.5	89.00	80.00			0,061	20.00
T640480	M80x1.5	100.00	90.00			0,065	20.00
T640490	M90x1.5						
T640500	M100x1.5						
T640610	1/4"	18.80	17.00			0,005	1000.00
T640613	3/8"	24.50	22.00			0,003	1000.00
T640616	1/2"	30.00	27.00			0,005	600.00
T640621	3/4"	36.50	33.00			0,008	400.00
T640626	1"	46.50	43.00			0,014	300.00
T640635	1 1/4"	53.00	48.00			0,015	150.00
T640640	1 1/2"	61.00	55.00			0,031	70.00
T640652	2"	70.50	64.00			0,037	50.00
T640663	2 1/2"	89.00	80.00			0,049	30.00
T640678	3"	105.00	95.00			0,103	20.00
T640702	4"	145.00	130.00			0,168	5.00
T640810	NPT 1/4"	18.80	17.00				
T640813	NPT 3/8"	26.50	24.00				
T640816	NPT 1/2"	26.50	24.00			0,005	500.00
T640821	NPT 3/4"	37.50	34.00			0,008	400.00
T640826	NPT 1"	46.40	42.00			0,020	200.00
T640835	NPT 1 1/4"	57.40	52.00			0,015	200.00
T640840	NPT 1 1/2"	65.10	60.00			0,031	100.00
T640852	NPT 2"	81.80	74.00			0,037	100.00
T640863	NPT 2 1/2"	89.00	80.00				
T640878	NPT 3"	105.00	95.00				
T640890	NPT 3 1/2"	128.50	115.00				
T640902	NPT 4"	145.00	130.00				
T640925	NPT 5"	178.50	160.00				