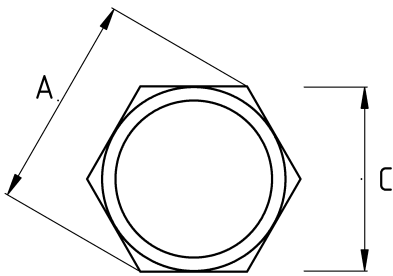


LOCKNUT, STAINLESS STEEL

- Stainless steel (316L) body
- Male-type cable gland is used for connecting a threadless junction box or panel
- Provides excellent resistance to outdoor conditions, acids, and oils



Technical Details



Product Code	Size I	A	B	C	D	E	Net Weight (kg/pc)	In Pack (pc)
T740207	PG7							
T740209	PG9							
T740211	PG11							
T740213	PG13.5							
T740216	PG16							
T740221	PG21							
T740229	PG29							
T740236	PG36							
T740242	PG42							
T740248	PG48							
T740412	M12x1.5						0,002	1000.00
T740416	M16x1.5						0,004	500.00
T740420	M20x1.5						0,006	500.00
T740425	M25x1.5						0,009	400.00
T740432	M32x1.5						0,017	400.00
T740440	M40x1.5						0,020	200.00
T740450	M50x1.5						0,033	100.00

"Your Conduit Partner"

T740463	M63x1.5					0,050	80.00
T740475	M75x1.5						
T740610	1/4"						
T740613	3/8"						
T740616	1/2"	24.00				0,005	200.00
T740621	3/4"	30.00				0,024	100.00
T740626	1"					0,045	60.00
T740635	1 1/4"						
T740640	1 1/2"	55.00					
T740652	2"						
T740663	2 1/2"						
T740678	3"						
T740702	4"						
T740813	NPT 3/8"						
T740816	NPT 1/2"					0,005	200.00
T740821	NPT 3/4"	30.00				0,024	100.00
T740826	NPT 1"					0,045	60.00
T740835	NPT 1 1/4"						
T740840	NPT 1 1/2"						
T740852	NPT 2"						