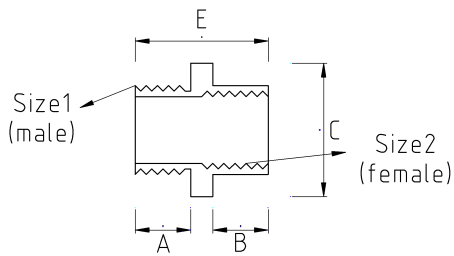


## REDUCER BUSHING, BRASS

- Brass nickel plated core



### Technical Details



Product Code	Size I	Size II	A	B	C	D	E	Net Weight (kg/pc)	In Pack (pc)
T67213209	PG13.5	PG9			22.00				
T67213211	PG13.5	PG11			22.00				
T67216211	PG16	PG11						0,018	100.00
T67216213	PG16	PG13.5							
T67221211	PG21	PG11						0,045	50.00
T67221213	PG21	PG13.5							
T67221216	PG21	PG16							
T67221420	PG21	M20x1.5							
T67229216	PG29	PG16						0,074	60.00
T67229221	PG29	PG21						0,063	60.00
T67229425	PG29	M25x1.5							
T67236229	PG36	PG29							
T67420209	M20x1.5	PG9			24.00				
T67420416	M20x1.5	M16x1.5			24.00				
T67425213	M25x1.5	PG13.5			30.00				
T67425416	M25x1.5	M16x1.5			30.00			0,034	50.00
T67425420	M25x1.5	M20x1.5			30.00			0,039	100.00

T67425616	M25x1.5	1/2"		30.00		0,039	50.00
T67432213	M32x1.5	PG13.5		34.00			
T67432216	M32x1.5	PG16		34.00		0,069	50.00
T67432221	M32x1.5	PG21		34.00			
T67432416	M32x1.5	M16x1.5		34.00		0,091	40.00
T67432420	M32x1.5	M20x1.5		34.00		0,058	50.00
T67432425	M32x1.5	M25x1.5		34.00		0,037	50.00
T67440425	M40x1.5	M25x1.5				0,102	40.00
T67440432	M40x1.5	M32x1.5				0,066	60.00
T67440626	M40x1.5	1"					
T67450440	M50x1.5	M40x1.5				0,117	40.00
T67450626	M50x1.5	1"					
T67463450	M63x1.5	M50x1.5				0,201	20.00
T67472463	M72x1.5	M63x1.5					10.00
T67475463	M75x1.5	M63x1.5					
T67475652	M75x1.5	2"					
T67480475	M80x1.5	M75x1.5					
T67616207	1/2"	PG7		24.00			
T67616209	1/2"	PG9		24.00			
T67616211	1/2"	PG11					
T67616610	1/2"	1/4"				0,021	100.00
T67616613	1/2"	3/8"				0,020	100.00
T67621211	3/4"	PG11				0,027	100.00
T67621213	3/4"	PG13.5					
T67621216	3/4"	PG16					
T67621416	3/4"	M16x1.5					
T67621420	3/4"	M20x1.5					
T67621616	3/4"	1/2"				0,033	100.00
T67626416	1"	M16x1.5					
T67626420	1"	M20x1.5					
T67626425	1"	M25x1.5					
T67626616	1"	1/2"				0,063	60.00
T67626621	1"	3/4"				0,050	60.00
T67635425	1 1/4"	M25x1.5					
T67635616	1 1/4"	1/2"					
T67635621	1 1/4"	3/4"					
T67635626	1 1/4"	1"					
T67640621	1 1/2"	3/4"					
T67640626	1 1/2"	1"					
T67640635	1 1/2"	1 1/4"					
T67652640	2"	1 1/2"					
T67678640	3"	1 1/2"					
T67816412	NPT 1/2"	M12x1.5					
T67816416	NPT 1/2"	M16x1.5					
T67816810	NPT 1/2"	NPT 1/4"					
T67821420	NPT 3/4"	M20x1.5					
T67821816	NPT 3/4"	NPT 1/2"					
T67826420	NPT 1"	M20x1.5					