

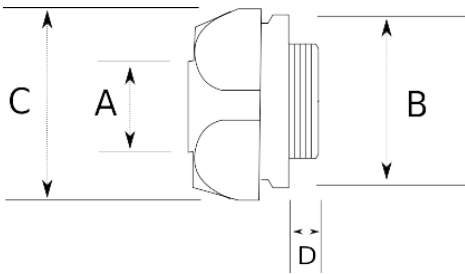
LIQUID-TIGHT CONNECTOR BRASS MALE

- Brass nickel plated core and cover
- Liquid-tight male connector for metallic flexible conduits
- Inside : PA6 Ring and galvanized ferrule
- High corrosion protection
- High vibration and traction resistance
- Suitable with T6400 series locknuts



IP65	-45 C	+105 C
------	-------	--------

Technical Details



Product Code	Size I	A	B	C	D	E	Net Weight (kg/pc)	In Pack (pc)
L600208	PG7	8.00	20.00	22.00	8.00		0,036	100.00
L600210	PG9	10.00	20.00	22.00	8.00		0,032	100.00
L600212	PG11	13.00	24.00	26.00			0,044	100.00
L600213	PG13.5	13.00	24.00	26.00			0,046	100.00
L600216	PG16	16.00	27.00	30.00	10.00		0,063	60.00
L600221	PG21	21.00	33.00	35.00	12.00		0,088	40.00
L600226	PG29	26.00	42.50	45.00			0,192	25.00
L600235	PG36	35.00	49.50	54.00			0,207	20.00
L600240	PG42	40.00	58.50	61.50			0,300	12.00
L600252	PG48	52.00	72.00	76.00			0,509	8.00
L600408	M12x1.5	8.00					0,035	100.00
L600410	M16x1.5	10.00	20.00	22.00			0,034	100.00
L600413	M20x1.5	13.00	24.00	26.00			0,046	100.00
L600416	M20x1.5	16.00	27.00	30.00			0,064	60.00
L600421	M25x1.5	21.00	33.00	35.00	11.50		0,087	40.00
L600426	M32x1.5	26.00	42.50	45.00			0,152	20.00
L600435	M40x1.5	35.00	49.50	54.00			0,201	20.00

L600440	M50x1.5	40.00	58.50	61.50			0,281	12.00
L600452	M63x1.5	52.00	72.00	76.00			0,599	8.00
L600463	M75x1.5	63.00						
L600466	M80x1.5	63.00						
L600478	M80x1.5	78.00					1,170	3.00
L600608	1/4"	8.00	20.00	22.00				100.00
L600610	1/4"	10.00	20.00	22.00			0,031	100.00
L600612	3/8"	13.00	24.00	26.00			0,046	100.00
L600613	1/2"	13.00	24.00	26.00			0,046	100.00
L600616	1/2"	16.00	27.00	30.00			0,065	60.00
L600621	3/4"	21.00	33.00	35.00			0,088	40.00
L600626	1"	26.00	42.50	45.00			0,145	20.00
L600635	1 1/4"	35.00	49.50	54.00			0,208	20.00
L600640	1 1/2"	40.00	58.50	61.50			0,278	12.00
L600652	2"	52.00	72.00	76.00			0,520	8.00
L600663	2 1/2"	63.00					1,382	4.00
L600678	3"	78.00					1,311	2.00
L600702	4"	102.00					1,851	1.00
L600808	NPT 1/4"	8.00					0,030	100.00
L600810	NPT 1/4"	10.00	20.00	22.00				
L600812	NPT 3/8"	13.00	24.00	26.00			0,035	100.00
L600813	NPT 1/2"	13.00	24.00	26.00			0,050	80.00
L600816	NPT 1/2"	16.00	27.00	30.00			0,060	60.00
L600821	NPT 3/4"	21.00	33.00	35.00			0,091	40.00
L600826	NPT 1"	26.00	42.50	45.00			0,159	20.00
L600835	NPT 1 1/4"	35.00	49.50	54.00			0,251	20.00
L600840	NPT 1 1/2"	40.00	58.50	61.50			0,303	12.00
L600852	NPT 2"	52.00	72.00	76.00			0,483	8.00
L600863	NPT 2 1/2"	63.00					1,368	4.00
L600878	NPT 3"	78.00						
L600902	NPT 4"	102.00						
L601207	PG7	10.00	20.00	22.00	9.00		0,030	100.00
L601208	PG11	10.00	20.00	22.00			0,030	100.00
L601209	PG13.5	10.00	20.00	22.00			0,035	100.00
L601211	PG7	13.00	24.00	26.00				
L601212	PG9	13.00	24.00	26.00			0,049	80.00
L601213	PG16	13.00	27.00	26.00			0,045	80.00
L601214	PG21	13.00	35.00	26.00				
L601215	PG13.5	16.00	28.00	30.00			0,066	50.00
L601216	PG21	16.00	28.00	30.00				
L601217	PG9	21.00	34.00	35.00			0,067	50.00
L601218	PG11	21.00	34.00	35.00			0,075	50.00
L601219	PG13.5	21.00	34.00	35.00			0,072	50.00
L601220	PG16	21.00	33.00	35.00			0,076	50.00
L601225	PG21	26.00	43.00	45.00			0,139	40.00
L601234	PG29	35.00	50.00	54.00	15.00		0,209	20.00
L601409	M12x1.5	10.00	20.00	22.00				
L601412	M16x1.5	13.00	24.00	26.00				
L601415	M16x1.5	16.00	28.00	30.00			0,050	100.00

L601416	M25x1.5	16.00	28.00	30.00			0,066	50.00
L601419	M16x1.5	21.00	34.00	35.00			0,070	40.00
L601420	M20x1.5	21.00	34.00	35.00			0,066	40.00
L601422	M32x1.5	21.00	34.00	35.00			0,078	40.00
L601423	M40x1.5	21.00	34.00	35.00			0,115	25.00
L601425	M25x1.5	26.00	43.00	45.00			0,137	20.00
L601427	M40x1.5	26.00	43.00	45.00			0,163	20.00
L601433	M25x1.5	35.00	50.00	54.00				
L601436	M50x1.5	35.00	50.00	54.00			0,275	20.00
L601437	M25x1.5	40.00	58.50	61.50				
L601439	M40x1.5	40.00	58.50	61.50				
L601451	M50x1.5	52.00	72.00	76.00			0,443	10.00
L601462	M63x1.5	63.00					0,854	5.00
L601476	M63x1.5	78.00						
L601477	M72x1.5	78.00					1,110	3.00
L601610	3/8"	10.00		22.00				
L601611	1/2"	10.00		22.00				
L601615	3/8"	16.00	28.00	30.00				
L601617	3/4"	16.00	28.00	30.00				
L601620	1/2"	21.00	34.00	35.00			0,093	40.00
L601625	3/4"	26.00	43.00	45.00			0,137	20.00
L601810	NPT 3/8"	10.00		22.00				
L601820	NPT 1/2"	21.00	34.00	35.00				