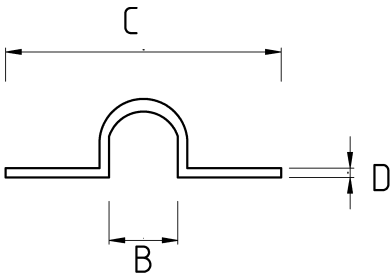


## PIPE CLAMP, HEAVY DUTY

- Galvanized steel core
- Used in pipes carrying heavy load



### Technical Details



Product Code	Size I	A	B	C	D	E	Net Weight (kg/pc)	In Pack (pc)
N882016	1/2"							
N882021	3/4"							
N882026	1"							
N882035	1 1/4"							
N882040	1 1/2"							
N882052	2"							
N882063	2 1/2"							
N882078	3"							
N882102	4"							
N882125	5"							
N882150	6"							
N882200	8"							
N882250	10"							