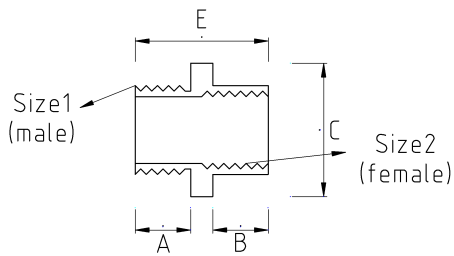


## REDUCER BUSHING, BRASS

- Brass nickel plated core



### Technical Details



| Product Code | Size I  | Size II | A | B | C     | D | E | Net Weight (kg/pc) | In Pack (pc) |
|--------------|---------|---------|---|---|-------|---|---|--------------------|--------------|
| T67213209    | PG13.5  | PG9     |   |   | 22.00 |   |   |                    |              |
| T67213211    | PG13.5  | PG11    |   |   | 22.00 |   |   |                    |              |
| T67216211    | PG16    | PG11    |   |   |       |   |   | 0,018              | 100.00       |
| T67216213    | PG16    | PG13.5  |   |   |       |   |   |                    |              |
| T67221211    | PG21    | PG11    |   |   |       |   |   | 0,045              | 50.00        |
| T67221213    | PG21    | PG13.5  |   |   |       |   |   |                    |              |
| T67221216    | PG21    | PG16    |   |   |       |   |   |                    |              |
| T67221420    | PG21    | M20x1.5 |   |   |       |   |   |                    |              |
| T67229216    | PG29    | PG16    |   |   |       |   |   | 0,074              | 60.00        |
| T67229221    | PG29    | PG21    |   |   |       |   |   | 0,063              | 60.00        |
| T67229425    | PG29    | M25x1.5 |   |   |       |   |   |                    |              |
| T67236229    | PG36    | PG29    |   |   |       |   |   |                    |              |
| T67420209    | M20x1.5 | PG9     |   |   | 24.00 |   |   |                    |              |
| T67420416    | M20x1.5 | M16x1.5 |   |   | 24.00 |   |   |                    |              |
| T67425213    | M25x1.5 | PG13.5  |   |   | 30.00 |   |   |                    |              |
| T67425416    | M25x1.5 | M16x1.5 |   |   | 30.00 |   |   | 0,034              | 50.00        |
| T67425420    | M25x1.5 | M20x1.5 |   |   | 30.00 |   |   | 0,039              | 100.00       |

|           |          |          |  |       |  |       |        |
|-----------|----------|----------|--|-------|--|-------|--------|
| T67425616 | M25x1.5  | 1/2"     |  | 30.00 |  | 0,039 | 50.00  |
| T67432213 | M32x1.5  | PG13.5   |  | 34.00 |  |       |        |
| T67432216 | M32x1.5  | PG16     |  | 34.00 |  | 0,069 | 50.00  |
| T67432221 | M32x1.5  | PG21     |  | 34.00 |  |       |        |
| T67432416 | M32x1.5  | M16x1.5  |  | 34.00 |  | 0,091 | 40.00  |
| T67432420 | M32x1.5  | M20x1.5  |  | 34.00 |  | 0,058 | 50.00  |
| T67432425 | M32x1.5  | M25x1.5  |  | 34.00 |  | 0,037 | 50.00  |
| T67440425 | M40x1.5  | M25x1.5  |  |       |  | 0,102 | 40.00  |
| T67440432 | M40x1.5  | M32x1.5  |  |       |  | 0,066 | 60.00  |
| T67440626 | M40x1.5  | 1"       |  |       |  |       |        |
| T67450440 | M50x1.5  | M40x1.5  |  |       |  | 0,117 | 40.00  |
| T67450626 | M50x1.5  | 1"       |  |       |  |       |        |
| T67463450 | M63x1.5  | M50x1.5  |  |       |  | 0,201 | 20.00  |
| T67472463 | M72x1.5  | M63x1.5  |  |       |  |       | 10.00  |
| T67475463 | M75x1.5  | M63x1.5  |  |       |  |       |        |
| T67475652 | M75x1.5  | 2"       |  |       |  |       |        |
| T67480475 | M80x1.5  | M75x1.5  |  |       |  |       |        |
| T67616207 | 1/2"     | PG7      |  | 24.00 |  |       |        |
| T67616209 | 1/2"     | PG9      |  | 24.00 |  |       |        |
| T67616211 | 1/2"     | PG11     |  |       |  |       |        |
| T67616610 | 1/2"     | 1/4"     |  |       |  | 0,021 | 100.00 |
| T67616613 | 1/2"     | 3/8"     |  |       |  | 0,020 | 100.00 |
| T67621211 | 3/4"     | PG11     |  |       |  | 0,027 | 100.00 |
| T67621213 | 3/4"     | PG13.5   |  |       |  |       |        |
| T67621216 | 3/4"     | PG16     |  |       |  |       |        |
| T67621416 | 3/4"     | M16x1.5  |  |       |  |       |        |
| T67621420 | 3/4"     | M20x1.5  |  |       |  |       |        |
| T67621616 | 3/4"     | 1/2"     |  |       |  | 0,033 | 100.00 |
| T67626416 | 1"       | M16x1.5  |  |       |  |       |        |
| T67626420 | 1"       | M20x1.5  |  |       |  |       |        |
| T67626425 | 1"       | M25x1.5  |  |       |  |       |        |
| T67626616 | 1"       | 1/2"     |  |       |  | 0,063 | 60.00  |
| T67626621 | 1"       | 3/4"     |  |       |  | 0,050 | 60.00  |
| T67635425 | 1 1/4"   | M25x1.5  |  |       |  |       |        |
| T67635616 | 1 1/4"   | 1/2"     |  |       |  |       |        |
| T67635621 | 1 1/4"   | 3/4"     |  |       |  |       |        |
| T67635626 | 1 1/4"   | 1"       |  |       |  |       |        |
| T67640621 | 1 1/2"   | 3/4"     |  |       |  |       |        |
| T67640626 | 1 1/2"   | 1"       |  |       |  |       |        |
| T67640635 | 1 1/2"   | 1 1/4"   |  |       |  |       |        |
| T67652640 | 2"       | 1 1/2"   |  |       |  |       |        |
| T67678640 | 3"       | 1 1/2"   |  |       |  |       |        |
| T67816412 | NPT 1/2" | M12x1.5  |  |       |  |       |        |
| T67816416 | NPT 1/2" | M16x1.5  |  |       |  |       |        |
| T67816810 | NPT 1/2" | NPT 1/4" |  |       |  |       |        |
| T67821420 | NPT 3/4" | M20x1.5  |  |       |  |       |        |
| T67821816 | NPT 3/4" | NPT 1/2" |  |       |  |       |        |
| T67826420 | NPT 1"   | M20x1.5  |  |       |  |       |        |