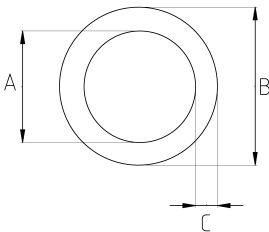


## RSC CONDUIT HDG

- Hot-dip galvanized steel core
- Electromagnetic interference screen system
- Easy carry and montage
- Mechanical protection
- RSC interior coating provides a smooth surface for faster wire pulling
- High grade durable & ductile steel for long life
- RSC is manufactured 10-feet (3,05 meters) lengths
- UL Listed
- With galvanized sleeve (one piece)



### Technical Details



Product Code	Size I	A	B	C	D	E	Net Weight (kg/m)	In Pack (m)
NR016	1/2"	16.05	21.34	2.64			1,220	30.50
NR021	3/4"	21.23	26.67	2.72			1,620	15.25
NR026	1"	27.00	33.40	3.20			2,390	15.25
NR035	1 1/4"	35.41	42.16	3.38			3,240	9.15
NR040	1 1/2"	41.25	48.26	3.51			3,910	9.15
NR052	2"	52.91	60.33	3.71			5,210	6.10
NR063	2 1/2"	63.22	73.03	4.90			8,310	3.05
NR078	3"	78.49	88.90	5.21			10,810	3.05
NR090	3 1/2"	90.68	101.60	5.46			13,090	3.05
NR102	4"	102.87	114.30	5.72			15,320	3.05
NR125	5"	128.85	141.30	6.22			20,820	3.05
NR150	6"	154.76	168.28	6.76			27,360	3.05