







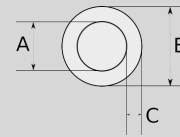


Infos of NR :



-  RSC CONDUIT HDG
-  IP
-  MIN 
-  MAX 
-  CERT
-  NR

- ▶ Hot-dip galvanized steel core
- ▶ Electromagnetic interference screen system
- ▶ Easy carry and montage
- ▶ Mechanical protection
- ▶ RSC interior coating provides a smooth surface for faster wire pulling
- ▶ High grade durable & ductile steel for long life
- ▶ RSC is manufactured 10-feet (3,05 meters) lengths
- ▶ UL Listed
- ▶ With galvanized sleeve (one piece)



Sizes & Prices :

Product Code	Size	Size	A (mm)	B (mm)	C (mm)	D (mm)	Meters in Pack (m)	Net Weight (kg/m)	Unit Price (USD/m)
NR016	1/2"		16.05	21.34	2.64		30.50	1,220	6,75
NR021	3/4"		21.23	26.67	2.72		15.20	1,620	8,55
NR026	1"		27.00	33.40	3.20		15.20	2,390	12,38
NR035	1 1/4"		35.41	42.16	3.38			3,240	16,21
NR040	1 1/2"		41.25	48.26	3.51			3,910	19,81
NR052	2"		52.91	60.33	3.71			5,210	26,55
NR063	2 1/2"		63.22	73.03	4.90			8,310	45,51
NR078	3"		78.49	88.90	5.21			10,810	58,51
NR090	3 1/2"		90.68	101.60	5.46			13,090	93,60
NR102	4"		102.87	114.30	5.72			15,320	83,25
NR125	5"		128.85	141.30	6.22			20,820	126,33
NR150	6"		154.76	168.28	6.76			27,360	155,00

Accessories :

CONDULET, MALLEABLE IRON, OUTLET E



N5790

CONDULET, MALLEABLE IRON, OUTLET E

CONDULET, MALLEABLE IRON, OUTLET LR



N5720

CONDULET, MALLEABLE IRON, OUTLET LR

RSC CONDUIT HDG



NR

RSC CONDUIT HDG

BOX, MALLEABLE, WITH MOUNT.LUGS, LONG TAPPED T



N5660

BOX, MALLEABLE IRON, WITH MOUNTING LUGS, LONG TAPPED T