

TERMINATION BOX, POLYAMIDE, BLACK

- Made of glass fiber reinforced polyamide 6 material
- Equipped with a cover for easy assembly and disassembly
- Fitted with stainless steel screws
- Wall thickness and impact resistance are equivalent to cast junction boxes
- Provides excellent resistance to outdoor conditions, acids, and oils
- Manufactured from a flame-retardant and halogen-free material
- Does not release toxic gases in case of fire
- Color: Black

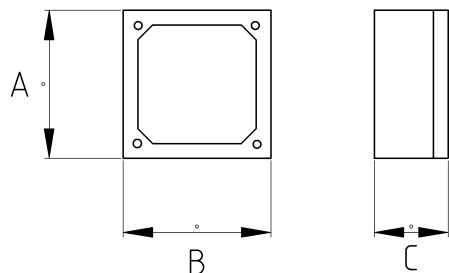


IP67

-45 C

+105 C

Technical Details



Product Code	Size I	A	B	C	D	E	Net Weight (kg/pc)	In Pack (pc)
F160152		130.00	130.00	90.00			0,511	10.00