

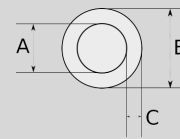
Infos of RL :



- ☁️
- IP
- MIN 🌡️
- MAX 🌡️
- CERT
- RL

**Passive Fire Protection No.1**

- ▶ Pre-galvanized light steel core
- ▶ Electromagnetic interference screen system
- ▶ Easy carry and montage
- ▶ Mechanical protection
- ▶ EMT interior coating provides a smooth surface for faster wire pulling
- ▶ High grade durable & ductile steel for long life
- ▶ RL model is manufactured 10-feet (3,05 meters) lengths



Sizes & Prices :

Product Code	Size	Size	A (mm)	B (mm)	C (mm)	D (mm)	Meters in Pack (M)	Net Weight (kg/M)	Export Price (USD/M)
<b>RL016</b>	1/2"		16.33	17.82	0.80		30.50	0,325	1,13
<b>RL021</b>	3/4"		21.62	23.40	0.90		30.50	0,546	1,81
<b>RL026</b>	1"		27.54	29.54	1.00		15.25	0,731	2,48
<b>RL035</b>	1 1/4"		37.75	38.40	1.31			0,000	4,51
<b>RL040</b>	1 1/2"		41.61	44.20	1.31			0,000	5,18
<b>RL052</b>	2"		53.02	55.80	1.41		9.00	1,950	7,43

Accessories :

EMT CONDULET, ALUMINUM, SET SCREW T TYPE



**R4760**

EMT CONDULET, ALUMINUM, SET SCREW T TYPE

EMT PULL ELBOW WITH GASKET 90



**R3970**

EMT PULL ELBOW WITH GASKET 90

FLEXIBLE CONDUIT CONNECTOR, METALLIC 90



**R5950**

FLEXIBLE CONDUIT CONNECTOR, METALLIC 90

EMT TWO HOLE STRAP



**R3820**

EMT TWO HOLE STRAP