

R3970

EMT PULL ELBOW WITH GASKET 90 - fleksan.com



"Your Conduit Partner"

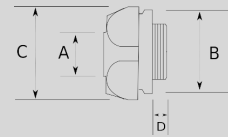
Infos of R3970 :



- ☁️
- IP
- MIN 🌡️
- MAX 🌡️
- CERT
- R3970

EMT PULL ELBOW WITH GASKET 90

- ▶ For dry locations
- ▶ Removable steel cover facilitates wire pulling
- ▶ Set-screw type
- ▶ Includes gasket



Sizes & Prices :

Product Code	Size	Size	A (mm)	B (mm)	C (mm)	D (mm)	Meters in Pack (щт)	Net Weight (кг/щт)	Export Price (USD/щт)
R397016	1/2"							0,000	3,59
R397021	3/4"							0,000	5,52
R397026	1"							0,000	10,32

Accessories :

EMT PULL ELBOW WITH GASKET 90



R3970

EMT PULL ELBOW WITH GASKET 90

EMT CONDUIT LIGHT TYPE



RL

Passive Fire Protection No.1

EMT COUPLING, STEEL, SET SCREW



R4550

EMT COUPLING, STEEL, SET SCREW

EMT RAIL CLIP



R4800

EMT RAIL CLIP