

# V4300









EX-PROOF PLUG, STEEL - fleksan.com

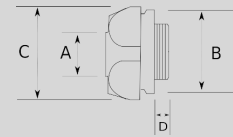


"Your Conduit Partner"

Infos of V4300 :



-  EX-PROOF PLUG, STEEL
-  IP
-  MIN 
-  MAX 
-  CERT
-  V4300



Sizes & Prices :

| Product Code | Size       | Size | A (mm) | B (mm) | C (mm) | D (mm) | Meters in Pack (шт) | Net Weight (кг/шт) | Export Price (USD/шт) |
|--------------|------------|------|--------|--------|--------|--------|---------------------|--------------------|-----------------------|
| V430816      | NPT 1/2"   |      |        |        |        |        |                     | 0,000              | 2,75                  |
| V430821      | NPT 3/4"   |      |        |        |        |        |                     | 0,000              | 3,35                  |
| V430826      | NPT 1"     |      |        |        |        |        |                     | 0,000              | 4,68                  |
| V430835      | NPT 1 1/4" |      |        |        |        |        |                     | 0,000              | 13,56                 |
| V430840      | NPT 1 1/2" |      |        |        |        |        |                     | 0,000              | 24,71                 |
| V430852      | NPT 2"     |      |        |        |        |        |                     | 0,000              | 59,66                 |

Accessories :

EX-PROOF FLUORESCENT TUBE 1x36W



V9500  
Ex Zone II

SEALING COMPOUND 1LT



V4190  
SEALING COMPOUND 1LT

EX-PROOF CONNECTOR, STAINLESS BMF



V7000  
EX-PROOF CONNECTOR, STAINLESS BMF

EX-PROOF NIPPLE, STEEL



V4700  
EX-PROOF NIPPLE, STEEL