

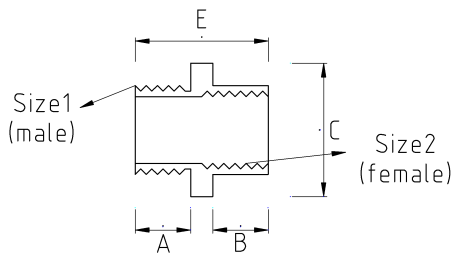
EX-PROOF REDUCER BUSHING, BRASS

- Brass nickel plated core
- ATEX II 2GD Ex db IIC Gb ; Ex eb IIC Gb ; Ex tb IIIC Db, IP66/68



| | | |
|------|-------|--------|
| IP68 | -40 C | +100 C |
|------|-------|--------|

Технические характеристики



| Код продукта | Размер I | Размер II | A | B | C | D | E | Вес нетто (кг/шт) | Количество в |
|--------------|----------|-----------|---|---|---|---|---|-------------------|--------------|
| V67420416 | M20x1.5 | M16x1.5 | | | | | | | |
| V67425416 | M25x1.5 | M16x1.5 | | | | | | | |
| V67425420 | M25x1.5 | M20x1.5 | | | | | | 0,034 | 100.00 |
| V67425816 | M25x1.5 | NPT 1/2" | | | | | | | |
| V67432420 | M32x1.5 | M20x1.5 | | | | | | 0,093 | 40.00 |
| V67432425 | M32x1.5 | M25x1.5 | | | | | | 0,064 | 60.00 |
| V67432816 | M32x1.5 | NPT 1/2" | | | | | | | |
| V67432821 | M32x1.5 | NPT 3/4" | | | | | | | |
| V67440425 | M40x1.5 | M25x1.5 | | | | | | 0,210 | 20.00 |
| V67440432 | M40x1.5 | M32x1.5 | | | | | | | |
| V67450425 | M50x1.5 | M25x1.5 | | | | | | | |
| V67450432 | M50x1.5 | M32x1.5 | | | | | | | |
| V67450440 | M50x1.5 | M40x1.5 | | | | | | 0,149 | 20.00 |
| V67463440 | M63x1.5 | M40x1.5 | | | | | | | |
| V67463450 | M63x1.5 | M50x1.5 | | | | | | | |
| V67816813 | NPT 1/2" | NPT 3/8" | | | | | | | |
| V67821416 | NPT 3/4" | M16x1.5 | | | | | | | |

| | | | | | | | | |
|-----------|------------|------------|--|--|--|--|-------|-------|
| V67821420 | NPT 3/4" | M20x1.5 | | | | | 0,043 | 80.00 |
| V67821816 | NPT 3/4" | NPT 1/2" | | | | | 0,040 | 80.00 |
| V67826425 | NPT 1" | M25x1.5 | | | | | | |
| V67826816 | NPT 1" | NPT 1/2" | | | | | | |
| V67826821 | NPT 1" | NPT 3/4" | | | | | | |
| V67835432 | NPT 1 1/4" | M32x1.5 | | | | | | |
| V67835821 | NPT 1 1/4" | NPT 3/4" | | | | | | |
| V67835826 | NPT 1 1/4" | NPT 1" | | | | | 0,107 | 30.00 |
| V67840821 | NPT 1 1/2" | NPT 3/4" | | | | | | |
| V67840826 | NPT 1 1/2" | NPT 1" | | | | | | |
| V67840835 | NPT 1 1/2" | NPT 1 1/4" | | | | | | |
| V67852840 | NPT 2" | NPT 1 1/2" | | | | | | |
| V67863852 | NPT 2 1/2" | NPT 2" | | | | | | |