

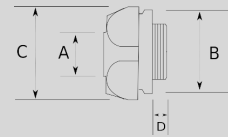
Infos of V6600 :



- ☁️
- IP68
- MIN 🌡️
- 40
- MAX 🌡️
- 100
- CERT
- V6600

EX-PROOF REDUCER, BRASS

- ▶ Brass nickel plated core
- ▶ ATEX II 2GD Ex db IIC Gb ; Ex eb IIC Gb ; Ex tb IIIC Db, IP66/68



Sizes & Prices :

| Product Code | Size | Size | A (mm) | B (mm) | C (mm) | D (mm) | Meters in Pack (шт) | Net Weight (кг/шт) | Export Price (USD/шт) |
|--------------|----------|------------|--------|--------|--------|--------|---------------------|--------------------|-----------------------|
| V66213835 | PG13.5 | NPT 1 1/4" | | | | | | 0,000 | 27,08 |
| V66416420 | M16x1.5 | M20x1.5 | | | | | | 0,000 | 13,51 |
| V66420425 | M20x1.5 | M25x1.5 | | | | | | 0,000 | 17,28 |
| V66420816 | M20x1.5 | NPT 1/2" | | | | | | 0,000 | 13,51 |
| V66420821 | M20x1.5 | NPT 3/4" | | | | | | 0,000 | 17,28 |
| V66420835 | M20x1.5 | NPT 1 1/4" | | | | | | 0,000 | 25,76 |
| V66425420 | M25x1.5 | M20x1.5 | | | | | | 0,000 | 11,38 |
| V66425821 | M25x1.5 | NPT 3/4" | | | | | | 0,000 | 27,75 |
| V66425835 | M25x1.5 | NPT 1 1/4" | | | | | | 0,000 | 27,08 |
| V66432425 | M32x1.5 | M25x1.5 | | | | | | 0,000 | 15,84 |
| V66432440 | M32x1.5 | M40x1.5 | | | | | | 0,000 | 40,86 |
| V66432826 | M32x1.5 | NPT 1" | | | | | | 0,000 | 25,51 |
| V66432835 | M32x1.5 | NPT 1 1/4" | | | | | | 0,000 | 32,81 |
| V66440432 | M40x1.5 | M32x1.5 | | | | | | 0,000 | 57,61 |
| V66440463 | M40x1.5 | M63x1.5 | | | | | | 0,000 | 58,51 |
| V66440835 | M40x1.5 | NPT 1 1/4" | | | | | | 0,000 | 27,53 |
| V66450425 | M50x1.5 | M25x1.5 | | | | | | 0,000 | 25,51 |
| V66450440 | M50x1.5 | M40x1.5 | | | | | | 0,000 | 26,52 |
| V66463440 | M63x1.5 | M40x1.5 | | | | | | 0,000 | 50,41 |
| V66463450 | M63x1.5 | M50x1.5 | | | | | | 0,000 | 50,41 |
| V66816420 | NPT 1/2" | M20x1.5 | | | | | | 0,000 | 14,12 |
| V66816821 | NPT 1/2" | NPT 3/4" | | | | | | 0,000 | 16,19 |
| V66816835 | NPT 1/2" | NPT 1 1/4" | | | | | | 0,000 | 26,62 |
| V66821416 | NPT 3/4" | M16x1.5 | | | | | | 0,000 | 14,45 |
| V66821816 | NPT 3/4" | NPT 1/2" | | | | | | 0,000 | 13,68 |
| V66821826 | NPT 3/4" | NPT 1" | | | | | | 0,000 | 17,95 |
| V66826816 | NPT 1" | NPT 1/2" | | | | | | 0,000 | 17,95 |
| V66826835 | NPT 1" | NPT 1 1/4" | | | | | | 0,000 | 27,53 |

Accessories :

EX-PROOF REDUCER COUPLING,
STEEL



V4560

EX-PROOF REDUCER COUPLING,
STEEL

EX-PROOF FLUORESCENT TUBE 1x36W



V9500

Ex Zone II

EX-PROOF CONNECTOR, STAINLESS
BMF



V7000

EX-PROOF CONNECTOR, STAINLESS
BMF

EX-PROOF PLUG, POLYAMIDE, BLACK



V1300

EX-PROOF PLUG, POLYAMIDE, BLACK