

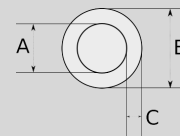
Infos of NS :



- IP
- MIN
- MAX
- CERT
- NS

IMC CONDUIT HDG

- ▶ Hot-dip galvanized steel core
- ▶ Electromagnetic interference screen system
- ▶ Easy carry and montage
- ▶ Mechanical protection
- ▶ IMC interior coating provides a smooth surface for faster wire pulling
- ▶ High grade durable & ductile steel for long life
- ▶ IMC is manufactured 10-feet (3,05 meters) lengths
- ▶ UL Listed
- ▶ With galvanized sleeve (one piece)



Sizes & Prices :

Product Code	Size	Size	A (mm)	B (mm)	C (mm)	D (mm)	Meters in Pack (M)	Net Weight (кг/м)	Export Price (USD/м)
NS016	1/2"		16.76	20.70	1.97		30.50	0,920	5,63
NS021	3/4"		21.93	26.13	2.10		30.50	1,250	7,21
NS026	1"		28.07	32.76	2.35			1,770	9,91
NS035	1 1/4"		36.75	41.60	2.42		15.25	2,350	13,51
NS040	1 1/2"		42.74	47.82	2.54			2,890	15,75
NS052	2"		54.59	59.94	2.67			3,810	20,71
NS063	2 1/2"		64.90	72.52	3.81			6,560	43,21
NS078	3"		80.67	88.29	3.81			8,080	60,66
NS090	3 1/2"		93.24	100.86	3.81			9,350	72,23
NS102	4"		105.82	113.44	3.81			10,410	63,45
NS125	5"							0,000	139,35
NS150	6"							0,000	184,43

Accessories :

ХОМУТ ВЫСОКОЙ НАГРУЗКИ



N8820

ХОМУТ ВЫСОКОЙ НАГРУЗКИ

IMC STRAP, TWO HOLE



N3820

IMC STRAP, TWO HOLE

CONDULET, IMC, OUTLET C



N4740

CONDULET, IMC, OUTLET C

WEATHERPROOF OUTLET BOX COVERS



N4660

WEATHERPROOF OUTLET BOX COVERS