

S7400

LOCKNUT, STAINLESS STEEL - fleksan.com



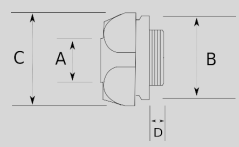
"Your Conduit Partner"

Infos of S7400 :



- LOCKNUT, STAINLESS STEEL
- IP
- MIN
- MAX
- CERT
- S7400

LOCKNUT, STAINLESS STEEL
 ▶ Stainless steel (SS316) core



Sizes & Prices :

Product Code	Size	Size	A (mm)	B (mm)	C (mm)	D (mm)	Meters in Pack (шт)	Net Weight (кг/шт)
S746816	NPT 1/2"							0,000
S746821	NPT 3/4"							0,000
S746826	NPT 1"							0,000
S746835	NPT 1 1/4"							0,000
S746840	NPT 1 1/2"							0,000
S746852	NPT 2"							0,000

Accessories :

<p>FLEXIBLE CONDUIT, STAINLESS, SMALL, LIQUID-TIGHT</p>  <p>SSN</p> <p>FLEXIBLE CONDUIT, STAINLESS STEEL, SMALL-BORE, LIQUID-TIGHT</p>	<p>FLEXIBLE CONDUIT, STAINLESS, SMALL</p>  <p>SS</p> <p>FLEXIBLE CONDUIT, STAINLESS STEEL, SMALL-BORE</p>	<p>LIQUID-TIGHT CONNECTOR, STAINLESS STEEL 90</p>  <p>S7900</p> <p>LIQUID-TIGHT CONNECTOR, STAINLESS STEEL 90</p>	<p>PLIABLE STAINLESS STEEL CONDUIT, TUBE</p>  <p>SPC</p> <p>PLIABLE STAINLESS STEEL CONDUIT, TUBE</p>
--	---	--	---