

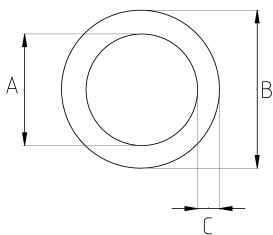
PLIABLE STAINLESS STEEL CONDUIT, TUBE

- Stainless steel core (SS304)
- Stainless steel provides excellent corrosion resistance
- Pliable
- They are easily bent by hand, and retain their shape when finally positioned
- Lead free
- Custom lengths are also possible upon inquiry



IP65

Технические характеристики



Код продукта	Размер l	A	B	C	D	E	Вес нетто (kg/шт)	Количество в
SPC04-0200		4.00	9.00	2.50	200.00			200.00
SPC04-0300		4.00	9.00	2.50	300.00			200.00
SPC04-0400		4.00	9.00	2.50	410.00		0,122	200.00
SPC04-0450		4.00	9.00	2.50	450.00			200.00
SPC04-0500		4.00	9.00	2.50	500.00		0,143	150.00
SPC04-0750		4.00	9.00	2.50	750.00		0,222	150.00
SPC04-1000		4.00	9.00	2.50	1000.00			100.00
SPC04-1500		4.00	9.00	2.50	1500.00		0,440	50.00
SPC04-2000		4.00	9.00	2.50	2000.00			50.00
SPC10-1000		10.00	15.00	2.50	1000.00			1.00