






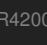


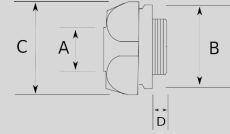
Infos of R4200 :



-  Galvanizli çelik dayanımı!
-  IP
-  MIN 
-  MAX 
-  CERT
-  R4200

Galvanizli çelik dayanımı!

- ▶ Sıcak daldırma galvanizli çelik gövde ve kapak
- ▶ Çelik gövde, darbe dayanımını artırır
- ▶ Sıkmalı kapak sayesinde EMT borunun, pano – buat bağlantısı sağlanır
- ▶ İç kısımda pürüzsüz bir iç çeper oluşturarak kablo çekimini kolaylaştırır
- ▶ Dişi Tip



Sizes & Prices :

Ürün Kodu	Ölçü	Ölçü	A (mm)	B (mm)	C (mm)	D (mm)	Paket Miktarı (ad)	Net Ağırlık (kg/ad)
R420016	1/2"							0,000
R420021	3/4"						50.00	0,058
R420026	1"						40.00	0,073
R420035	1 1/4"							0,000
R420040	1 1/2"							0,000
R420052	2"							0,000

Accessories :

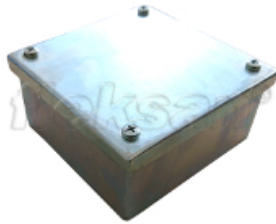
EMT BORU RAKORU, ÇELİK, VIDALI



R4050

EMT boru için çelik rakor.

ÇELİK SIVAÜSTÜ KAPAKLI BUAT



R4600

Kapalı tip kapaklı buat!

EMT BORU RAKORU, ÇELİK, SIKMALI, DİŞİ



R4200

Galvanizli çelik dayanımı!

EMT KONDULET, ALÜMİNYUM, VIDALI T TİP



R4760

Sonradan müdahale edilebilir tesisatlar için!