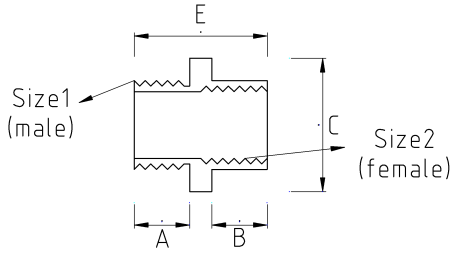


Artık ölçü değiştirmek sorun değil!

- Pirinç malzeme üzeri nikel kaplamalı
- Dış hava şartlarına, asitlere, yağlara karşı mükemmel dayanım
- Düşük çaptaki boruyu veya rakoru daha yüksek çaptaki dış çekilmiş bir deliğe, buata veya panoya bağlantı amacıyla kullanılır
- Genel bağlantı boyu uzatır
- Dişi - erkek bağlantı sağlar



Teknik Özellikler



Ürün Kodu	Ölçü I	Ölçü II	A	B	C	D	E	Net Ağırlık (kg/ad)	Paket Miktarı (ad)
T66209207	PG9	PG7							
T66209211	PG9	PG11						0,022	100.00
T66209420	PG9	M20x1.5							
T66209613	PG9	3/8"							
T66209616	PG9	1/2"							
T66209821	PG9	NPT 3/4"							
T66211209	PG11	PG9							
T66211213	PG11	PG13.5						0,024	100.00
T66211216	PG11	PG16						0,030	100.00
T66211613	PG11	3/8"							
T66211616	PG11	1/2"						0,022	100.00
T66211621	PG11	3/4"							
T66213209	PG13.5	PG9			22.00				
T66213211	PG13.5	PG11			22.00			0,022	100.00
T66213216	PG13.5	PG16							
T66213221	PG13.5	PG21							
T66213613	PG13.5	3/8"							

T66213616	PG13.5	1/2"				0,030		100.00
T66213621	PG13.5	3/4"						
T66216211	PG16	PG11				0,026		100.00
T66216213	PG16	PG13.5						
T66216221	PG16	PG21				0,026		100.00
T66216420	PG16	M20x1.5						
T66216425	PG16	M25x1.5				0,034		100.00
T66216616	PG16	1/2"				0,026		100.00
T66216621	PG16	3/4"		30.00		0,039		100.00
T66221211	PG21	PG11				0,045		60.00
T66221213	PG21	PG13.5						
T66221216	PG21	PG16						
T66221229	PG21	PG29						
T66221420	PG21	M20x1.5						
T66221425	PG21	M25x1.5						
T66221432	PG21	M32x1.5		34.00				
T66221621	PG21	3/4"		30.00		0,042		60.00
T66229216	PG29	PG16						
T66229221	PG29	PG21						
T66229236	PG29	PG36						
T66229425	PG29	M25x1.5						
T66229432	PG29	M32x1.5						
T66229626	PG29	1"						
T66236229	PG36	PG29						
T66408616	M8	1/2"						
T66412416	M12x1.5	M16x1.5						
T66412816	M12x1.5	NPT 1/2"						
T66416420	M16x1.5	M20x1.5				0,023		100.00
T66416425	M16x1.5	M25x1.5						
T66416816	M16x1.5	NPT 1/2"						
T66416821	M16x1.5	NPT 3/4"						
T66418432	M18x1.5	M32x1.5				0,066		60.00
T66420209	M20x1.5	PG9		24.00		0,022		100.00
T66420416	M20x1.5	M16x1.5		24.00		0,021		100.00
T66420425	M20x1.5	M25x1.5		30.00		0,029		100.00
T66420432	M20x1.5	M32x1.5		34.00				
T66420616	M20x1.5	1/2"		24.00		0,027		100.00
T66420621	M20x1.5	3/4"		30.00		0,038		100.00
T66420816	M20x1.5	NPT 1/2"						
T66420821	M20x1.5	NPT 3/4"						
T66425213	M25x1.5	PG13.5		30.00				
T66425416	M25x1.5	M16x1.5		30.00		0,034		100.00
T66425420	M25x1.5	M20x1.5		30.00		0,039		100.00
T66425432	M25x1.5	M32x1.5		34.00		0,047		60.00
T66425440	M25x1.5	M40x1.5						
T66425616	M25x1.5	1/2"		30.00		0,037		100.00
T66425621	M25x1.5	3/4"		30.00		0,038		100.00
T66425821	M25x1.5	NPT 3/4"		30.00				
T66425826	M25x1.5	NPT 1"		30.00				

T66427432	M27x1.5	M32x1.5		36.00		0,067	60.00
T66432213	M32x1.5	PG13.5		34.00			
T66432216	M32x1.5	PG16		34.00			
T66432221	M32x1.5	PG21		34.00			
T66432420	M32x1.5	M20x1.5		34.00		0,058	60.00
T66432425	M32x1.5	M25x1.5		34.00		0,037	60.00
T66432440	M32x1.5	M40x1.5					
T66432821	M32x1.5	NPT 3/4"					
T66432826	M32x1.5	NPT 1"					
T66432835	M32x1.5	NPT 1 1/4"					
T66440425	M40x1.5	M25x1.5				0,102	40.00
T66440432	M40x1.5	M32x1.5				0,075	40.00
T66440450	M40x1.5	M50x1.5					
T66440626	M40x1.5	1"					
T66440826	M40x1.5	NPT 1"					
T66440835	M40x1.5	NPT 1 1/4"					
T66440840	M40x1.5	NPT 1 1/2"					
T66450425	M50x1.5	M25x1.5					
T66450432	M50x1.5	M32x1.5					
T66450440	M50x1.5	M40x1.5				0,135	40.00
T66450463	M50x1.5	M63x1.5					
T66450626	M50x1.5	1"					
T66450652	M50x1.5	2"					
T66463425	M63x1.5	M25x1.5				0,232	20.00
T66463450	M63x1.5	M50x1.5				0,213	20.00
T66463472	M63x1.5	M72x1.5					
T66463652	M63x1.5	2"					
T66463840	M63x1.5	NPT 1 1/2"					
T66463852	M63x1.5	NPT 2"					
T66463863	M63x1.5	NPT 2 1/2"				0,467	10.00
T66472463	M72x1.5	M63x1.5					10.00
T66475463	M75x1.5	M63x1.5					
T66475652	M75x1.5	2"					
T66480475	M80x1.5	M75x1.5					
T66613209	3/8"	PG9					
T66613211	3/8"	PG11					
T66613616	3/8"	1/2"				0,023	100.00
T66613621	3/8"	3/4"					
T66616207	1/2"	PG7		24.00			
T66616209	1/2"	PG9		24.00			
T66616211	1/2"	PG11					
T66616213	1/2"	PG13.5					
T66616216	1/2"	PG16					
T66616420	1/2"	M20x1.5				0,022	100.00
T66616425	1/2"	M25x1.5					
T66616610	1/2"	1/4"				0,021	100.00
T66616613	1/2"	3/8"					
T66616621	1/2"	3/4"				0,050	100.00
T66616626	1/2"	1"					

T66616635	1/2"	1 1/4"					
T66616640	1/2"	1 1/2"					
T66621211	3/4"	PG11			0,027		100.00
T66621213	3/4"	PG13.5					
T66621216	3/4"	PG16					
T66621221	3/4"	PG21					
T66621416	3/4"	M16x1.5					
T66621420	3/4"	M20x1.5					
T66621425	3/4"	M25x1.5			0,043		100.00
T66621616	3/4"	1/2"			0,033		100.00
T66621626	3/4"	1"			0,065		60.00
T66621635	3/4"	1 1/4"					
T66621640	3/4"	1 1/2"			0,173		20.00
T66626229	1"	PG29					
T66626416	1"	M16x1.5					
T66626420	1"	M20x1.5					
T66626425	1"	M25x1.5					
T66626432	1"	M32x1.5			0,038		60.00
T66626616	1"	1/2"					
T66626621	1"	3/4"			0,050		60.00
T66626635	1"	1 1/4"			0,143		40.00
T66626640	1"	1 1/2"			0,175		20.00
T66635425	1 1/4"	M25x1.5					
T66635432	1 1/4"	M32x1.5					
T66635616	1 1/4"	1/2"					
T66635621	1 1/4"	3/4"					
T66635626	1 1/4"	1"					
T66635640	1 1/4"	1 1/2"					
T66640621	1 1/2"	3/4"					
T66640626	1 1/2"	1"					
T66640635	1 1/2"	1 1/4"					
T66652640	2"	1 1/2"					
T66663678	2 1/2"	3"					
T66678640	3"	1 1/2"					
T66678652	3"	2"					
T66678663	3"	2 1/2"					
T66810821	NPT 1/4"	NPT 3/4"					
T66816412	NPT 1/2"	M12x1.5					
T66816416	NPT 1/2"	M16x1.5					
T66816420	NPT 1/2"	M20x1.5			0,031		100.00
T66816810	NPT 1/2"	NPT 1/4"					
T66816821	NPT 1/2"	NPT 3/4"			0,043		60.00
T66821420	NPT 3/4"	M20x1.5					
T66821816	NPT 3/4"	NPT 1/2"					
T66821826	NPT 3/4"	NPT 1"					
T66821840	NPT 3/4"	NPT 1 1/2"					
T66826816	NPT 1"	NPT 1/2"					
T66826821	NPT 1"	NPT 3/4"					
T66826840	NPT 1"	NPT 1 1/2"			0,187		20.00

T66835852	NPT 1 1/4"	NPT 2"								
T66840821	NPT 1 1/2"	NPT 3/4"								
T66840835	NPT 1 1/2"	NPT 1 1/4"								
T66840852	NPT 1 1/2"	NPT 2"								
T66852863	NPT 2"	NPT 2 1/2"								
T66852878	NPT 2"	NPT 3"								
T66863878	NPT 2 1/2"	NPT 3"								
T66878852	NPT 3"	NPT 2"						0,965		4.00