

Pirinç üzeri nikel kaplı rakor – IP67

- Pirinç gövde, nikel kaplamalı
- Harici tip erkek rakor
- Dış hava şartlarına, yağlara, asitlere karşı yüksek koruma
- BF, BS, BN model çelik spiral borularla kullanıldığında IP50
- LT model çelik spiral boru ile kullanıldığında IP67
- T6400 pirinç kilitleme somunu dahil değildir
- Pano giriş – Erkek tip

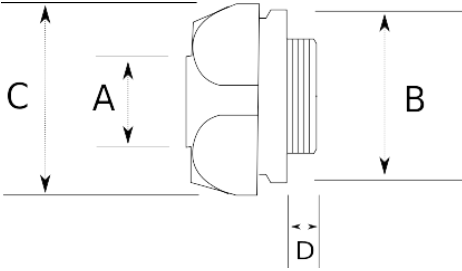


IP65

-45 C

+105 C

Teknik Özellikler



| Ürün Kodu | Ölçü I | A | B | C | D | E | Net Ağırlık (kg/ad) | Paket Miktarı (ad) |
|-----------|---------|-------|-------|-------|-------|---|---------------------|--------------------|
| L600208 | PG7 | 8.00 | 20.00 | 22.00 | 8.00 | | 0,036 | 100.00 |
| L600210 | PG9 | 10.00 | 20.00 | 22.00 | 8.00 | | 0,032 | 100.00 |
| L600212 | PG11 | 13.00 | 24.00 | 26.00 | | | 0,044 | 100.00 |
| L600213 | PG13.5 | 13.00 | 24.00 | 26.00 | | | 0,046 | 100.00 |
| L600216 | PG16 | 16.00 | 27.00 | 30.00 | 10.00 | | 0,063 | 60.00 |
| L600221 | PG21 | 21.00 | 33.00 | 35.00 | 12.00 | | 0,088 | 40.00 |
| L600226 | PG29 | 26.00 | 42.50 | 45.00 | | | 0,192 | 25.00 |
| L600235 | PG36 | 35.00 | 49.50 | 54.00 | | | 0,207 | 20.00 |
| L600240 | PG42 | 40.00 | 58.50 | 61.50 | | | 0,300 | 12.00 |
| L600252 | PG48 | 52.00 | 72.00 | 76.00 | | | 0,509 | 8.00 |
| L600408 | M12x1.5 | 8.00 | | | | | 0,035 | 100.00 |
| L600410 | M16x1.5 | 10.00 | 20.00 | 22.00 | | | 0,034 | 100.00 |
| L600413 | M20x1.5 | 13.00 | 24.00 | 26.00 | | | 0,046 | 100.00 |
| L600416 | M20x1.5 | 16.00 | 27.00 | 30.00 | | | 0,064 | 60.00 |
| L600421 | M25x1.5 | 21.00 | 33.00 | 35.00 | 11.50 | | 0,087 | 40.00 |
| L600426 | M32x1.5 | 26.00 | 42.50 | 45.00 | | | 0,152 | 20.00 |
| L600435 | M40x1.5 | 35.00 | 49.50 | 54.00 | | | 0,201 | 20.00 |

| | | | | | | | | |
|---------|------------|--------|-------|-------|-------|--|-------|--------|
| L600440 | M50x1.5 | 40.00 | 58.50 | 61.50 | | | 0,281 | 12.00 |
| L600452 | M63x1.5 | 52.00 | 72.00 | 76.00 | | | 0,599 | 8.00 |
| L600463 | M75x1.5 | 63.00 | | | | | | |
| L600466 | M80x1.5 | 63.00 | | | | | | |
| L600478 | M80x1.5 | 78.00 | | | | | 1,170 | 3.00 |
| L600608 | 1/4" | 8.00 | 20.00 | 22.00 | | | | 100.00 |
| L600610 | 1/4" | 10.00 | 20.00 | 22.00 | | | 0,031 | 100.00 |
| L600612 | 3/8" | 13.00 | 24.00 | 26.00 | | | 0,046 | 100.00 |
| L600613 | 1/2" | 13.00 | 24.00 | 26.00 | | | 0,046 | 100.00 |
| L600616 | 1/2" | 16.00 | 27.00 | 30.00 | | | 0,065 | 60.00 |
| L600621 | 3/4" | 21.00 | 33.00 | 35.00 | | | 0,088 | 40.00 |
| L600626 | 1" | 26.00 | 42.50 | 45.00 | | | 0,145 | 20.00 |
| L600635 | 1 1/4" | 35.00 | 49.50 | 54.00 | | | 0,208 | 20.00 |
| L600640 | 1 1/2" | 40.00 | 58.50 | 61.50 | | | 0,278 | 12.00 |
| L600652 | 2" | 52.00 | 72.00 | 76.00 | | | 0,520 | 8.00 |
| L600663 | 2 1/2" | 63.00 | | | | | 1,382 | 4.00 |
| L600678 | 3" | 78.00 | | | | | 1,311 | 2.00 |
| L600702 | 4" | 102.00 | | | | | 1,851 | 1.00 |
| L600808 | NPT 1/4" | 8.00 | | | | | 0,030 | 100.00 |
| L600810 | NPT 1/4" | 10.00 | 20.00 | 22.00 | | | | |
| L600812 | NPT 3/8" | 13.00 | 24.00 | 26.00 | | | 0,035 | 100.00 |
| L600813 | NPT 1/2" | 13.00 | 24.00 | 26.00 | | | 0,050 | 80.00 |
| L600816 | NPT 1/2" | 16.00 | 27.00 | 30.00 | | | 0,060 | 60.00 |
| L600821 | NPT 3/4" | 21.00 | 33.00 | 35.00 | | | 0,091 | 40.00 |
| L600826 | NPT 1" | 26.00 | 42.50 | 45.00 | | | 0,159 | 20.00 |
| L600835 | NPT 1 1/4" | 35.00 | 49.50 | 54.00 | | | 0,251 | 20.00 |
| L600840 | NPT 1 1/2" | 40.00 | 58.50 | 61.50 | | | 0,303 | 12.00 |
| L600852 | NPT 2" | 52.00 | 72.00 | 76.00 | | | 0,483 | 8.00 |
| L600863 | NPT 2 1/2" | 63.00 | | | | | 1,368 | 4.00 |
| L600878 | NPT 3" | 78.00 | | | | | | |
| L600902 | NPT 4" | 102.00 | | | | | | |
| L601207 | PG7 | 10.00 | 20.00 | 22.00 | 9.00 | | 0,030 | 100.00 |
| L601208 | PG11 | 10.00 | 20.00 | 22.00 | | | 0,030 | 100.00 |
| L601209 | PG13.5 | 10.00 | 20.00 | 22.00 | | | 0,035 | 100.00 |
| L601211 | PG7 | 13.00 | 24.00 | 26.00 | | | | |
| L601212 | PG9 | 13.00 | 24.00 | 26.00 | | | 0,049 | 80.00 |
| L601213 | PG16 | 13.00 | 27.00 | 26.00 | | | 0,045 | 80.00 |
| L601214 | PG21 | 13.00 | 35.00 | 26.00 | | | | |
| L601215 | PG13.5 | 16.00 | 28.00 | 30.00 | | | 0,066 | 50.00 |
| L601216 | PG21 | 16.00 | 28.00 | 30.00 | | | | |
| L601217 | PG9 | 21.00 | 34.00 | 35.00 | | | 0,067 | 50.00 |
| L601218 | PG11 | 21.00 | 34.00 | 35.00 | | | 0,075 | 50.00 |
| L601219 | PG13.5 | 21.00 | 34.00 | 35.00 | | | 0,072 | 50.00 |
| L601220 | PG16 | 21.00 | 33.00 | 35.00 | | | 0,076 | 50.00 |
| L601225 | PG21 | 26.00 | 43.00 | 45.00 | | | 0,139 | 40.00 |
| L601234 | PG29 | 35.00 | 50.00 | 54.00 | 15.00 | | 0,209 | 20.00 |
| L601409 | M12x1.5 | 10.00 | 20.00 | 22.00 | | | | |
| L601412 | M16x1.5 | 13.00 | 24.00 | 26.00 | | | | |
| L601415 | M16x1.5 | 16.00 | 28.00 | 30.00 | | | 0,050 | 100.00 |

| | | | | | | | | |
|---------|----------|-------|-------|-------|--|--|-------|-------|
| L601416 | M25x1.5 | 16.00 | 28.00 | 30.00 | | | 0,066 | 50.00 |
| L601419 | M16x1.5 | 21.00 | 34.00 | 35.00 | | | 0,070 | 40.00 |
| L601420 | M20x1.5 | 21.00 | 34.00 | 35.00 | | | 0,066 | 40.00 |
| L601422 | M32x1.5 | 21.00 | 34.00 | 35.00 | | | 0,078 | 40.00 |
| L601423 | M40x1.5 | 21.00 | 34.00 | 35.00 | | | 0,115 | 25.00 |
| L601425 | M25x1.5 | 26.00 | 43.00 | 45.00 | | | 0,137 | 20.00 |
| L601427 | M40x1.5 | 26.00 | 43.00 | 45.00 | | | 0,163 | 20.00 |
| L601433 | M25x1.5 | 35.00 | 50.00 | 54.00 | | | | |
| L601436 | M50x1.5 | 35.00 | 50.00 | 54.00 | | | 0,275 | 20.00 |
| L601437 | M25x1.5 | 40.00 | 58.50 | 61.50 | | | | |
| L601439 | M40x1.5 | 40.00 | 58.50 | 61.50 | | | | |
| L601451 | M50x1.5 | 52.00 | 72.00 | 76.00 | | | 0,443 | 10.00 |
| L601462 | M63x1.5 | 63.00 | | | | | 0,854 | 5.00 |
| L601476 | M63x1.5 | 78.00 | | | | | | |
| L601477 | M72x1.5 | 78.00 | | | | | 1,110 | 3.00 |
| L601610 | 3/8" | 10.00 | | 22.00 | | | | |
| L601611 | 1/2" | 10.00 | | 22.00 | | | | |
| L601615 | 3/8" | 16.00 | 28.00 | 30.00 | | | | |
| L601617 | 3/4" | 16.00 | 28.00 | 30.00 | | | | |
| L601620 | 1/2" | 21.00 | 34.00 | 35.00 | | | 0,093 | 40.00 |
| L601625 | 3/4" | 26.00 | 43.00 | 45.00 | | | 0,137 | 20.00 |
| L601810 | NPT 3/8" | 10.00 | | 22.00 | | | | |
| L601820 | NPT 1/2" | 21.00 | 34.00 | 35.00 | | | | |